



1923

CATALOG

STONECRAFTS.COM



# ABOUT US



The Chandra family has a long history of enterprise and commercial activity dating back to as early as 1820. The various fields included wholesaling, agriculture, international merchants, banking, flour and cotton mills and were conferred the prestigious title of Rai Bahadur by the British Empire, which was only given to very selected people throughout India and was symbolic of power and prestige in the country. Art House is Manufacturer, Exporter and Supplier of products like Indian Veneer, Indian Cobble, Indian Sandstone, Indian Limestone, Natural Slate, Natural Marble, Natural Granite etc.

Rai Bahadur Seth Tara Chand became the treasure and Mayor of the city of Agra and remain so till the independence Era of India. The family were also the presidents of the Calcutta stock exchange-the premier stock exchange of India pre-independence.

In 1926 Indian marble works company was established with social and artistic philanthropy in mind, to support local artisans and their families whose ancestors built the most magnificent creation in marble - The Taj Mahal. During this period the marble workshop engaged more than 400 stone masons and made marble objects for prominent people including the viceroy of India. The most popular creation by the Indian marble works company was The Mughal Suite made for Doris Duke and James Cromwell, currently part of the Shangri La Museum in Hawaii. (designed by Bloomfield architects, recommended by viceroy of India).

Indian Marble works company originally formed for philanthropic purpose later became main stream business of the family and was restructured in 1980 by Naveen Chandra. The new company executed some of the most prestigious projects in India with extra ordinary stone and marble works.

His son Barun Chandra took the business to another level and spread the business globally and today the group has clients in U.S.A, Canada, Russia, Ukraine, Taiwan, Italy, France, Germany, Netherlands, Austria, Dubai, Kuwait, Qatar, Bahrain, Thailand, Australia etc.

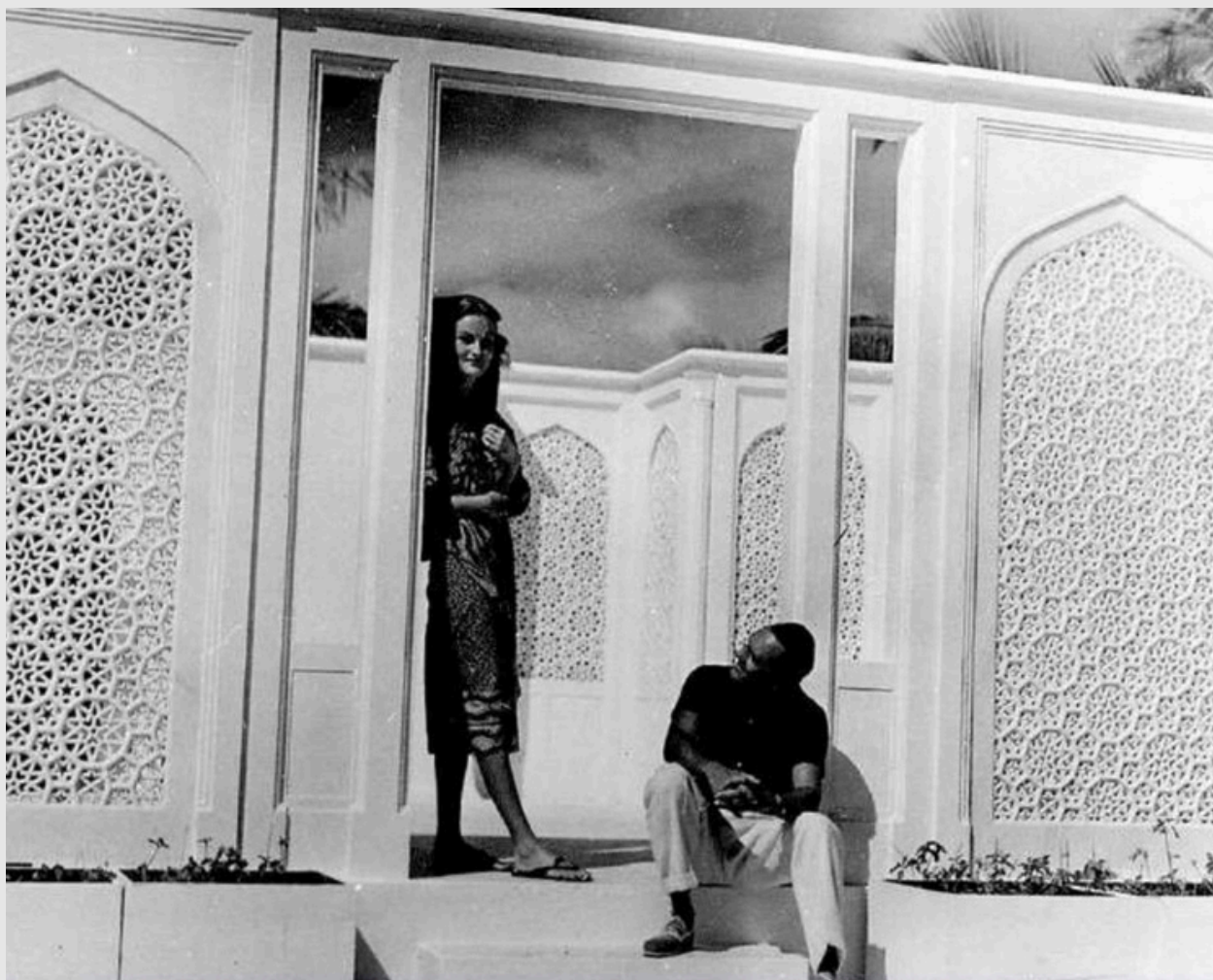


# Projects

A proud highlight of our portfolio, this exceptional installation—originally designed by Bloomfield Architects and recommended by the Viceroy of India in 1935—is now preserved and displayed at the prestigious Shangri La Museum of Islamic Art, Culture & Design in Honolulu.

Executed with meticulous attention to detail by our team, the work reflects the grandeur and refinement of early 20th-century Indo-Islamic design. Crafted using traditional techniques and featuring intricate hand-carved elements, inlaid marble, and semi-precious stone artworks, the piece stands as a testament to timeless craftsmanship.

Its presence at Shangri-La not only honors the original vision of Doris Duke's collection but also exemplifies our commitment to preserving architectural heritage through artisanal excellence. This installation marks a significant achievement, showcasing our work on an international stage and within one of the world's most respected institutions of Islamic art and design.



Doris Duke and James Cromwell pose by the Jali Pavilion at Shangri La, 1939.





Bathroom, Mughal Suite, Shangri La. Doris Duke Foundation for Islamic Art, Honolulu, Hawai'i.



Bedroom looking southwest, Mughal Suite, Shangri La. Doris Duke Foundation for Islamic Art, Honolulu, Hawai'i.



A photograph of a luxurious interior hallway. The walls are made of large, light-colored stone blocks. A large, ornate chandelier hangs from the ceiling. The floor is covered with a large, patterned rug. The hallway leads to a room with a patterned wall and a chandelier.

# Queen's Ridge Place- Las Vegas

Queens Ridge Place in Las Vegas, showcasing luxurious custom finishes, elegant design elements, and the timeless artistry of intricate pietre dura stone inlays throughout the space.









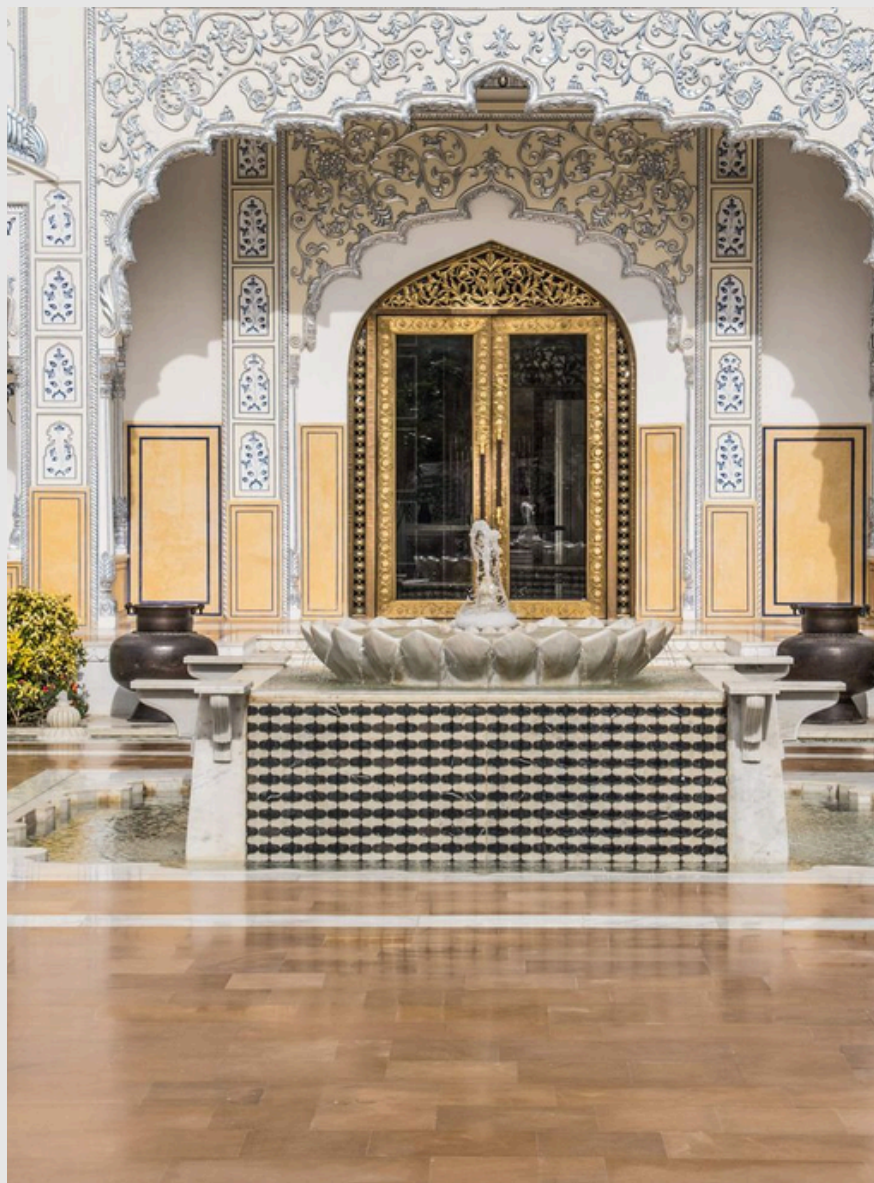




# Leela Palace- Jaipur, India

The Leela Palace Jaipur features exquisite stone art, including intricately carved sandstone jalis, sculpted white marble statues like elephants, and temple-style stone carvings. Highlights include a serene Maa Durga temple and detailed courtyard sculptures, all reflecting traditional Rajasthani craftsmanship and royal elegance.









# Oberoi Amarvillas- Agra, India

The Oberoi Amarvillas, Agra—one of our first major hotel projects. They executed all the stonework, including intricate jalis, arches, and columns inspired by Mughal architecture. Their standout contributions include the majestic, handcrafted mashals (torches) at the entrance and elegant stone fountains across the terraced gardens. Their work helped define the hotel's luxurious, heritage-rich aesthetic.









# Private Villa- Emirate Hills, Dubai

Our company proudly completed an exclusive private villa in the prestigious Emirates Hills, showcasing unmatched craftsmanship and luxury. A highlight of the residence is the installation of the tallest semi-precious stone columns ever made from rose quartz—standing at an impressive 10 meters tall. These bespoke columns not only set a global benchmark but also serve as a breathtaking focal point within the villa, reflecting our commitment to pushing the boundaries of design and excellence.









# Private Villa- Emirate Hills, Dubai

This luxurious private villa in Muscat exemplifies refined craftsmanship and opulent design, blending traditional Islamic architecture with contemporary sophistication. The interiors feature intricate flooring inlays and bespoke wall treatments created using a selection of semi-precious stones, meticulously arranged into floral and geometric artworks. The villa also showcases grand malachite stone columns crowned with gold-finished capitals, adding a regal presence to the hallways. From hand-carved wooden arches to polished marble mosaics, every detail reflects the highest standards of artisanal execution and elegance.





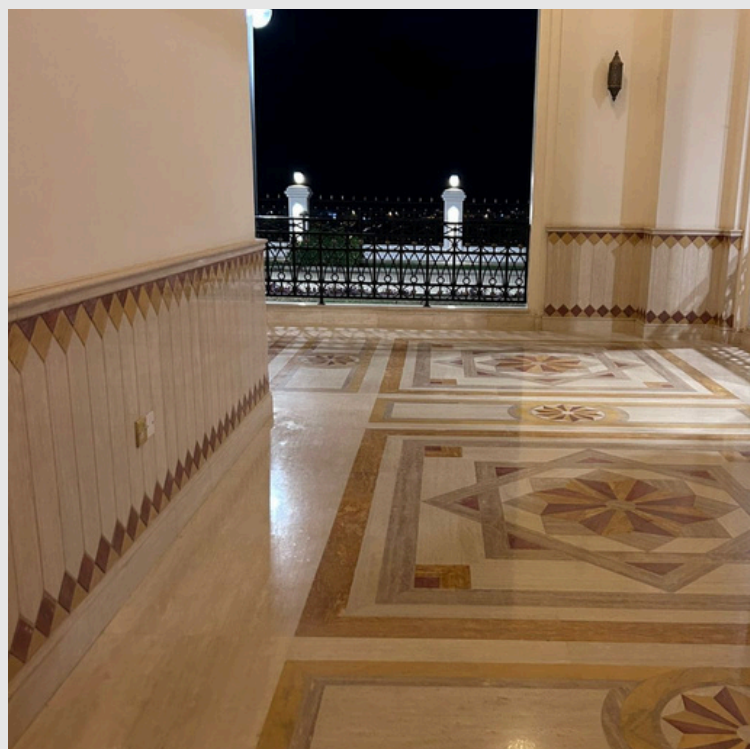




# Private Villa- Muscat, Oman

This luxurious private villa in Muscat exemplifies refined craftsmanship and opulent design, blending traditional Islamic architecture with contemporary sophistication. The interiors feature intricate flooring inlays and bespoke wall treatments created using a selection of semi-precious stones, meticulously arranged into floral and geometric artworks. The villa also showcases grand malachite stone columns crowned with gold-finished capitals, adding a regal presence to the hallways. From hand-carved wooden arches to polished marble mosaics, every detail reflects the highest standards of artisanal execution and elegance.







The image shows a wall composed of several square and rectangular panels. Each panel is decorated with different intricate carvings and inlays. Some panels feature floral motifs, others have geometric patterns like a diamond grid, and some include small, dark, square inlays. The overall style is highly detailed and ornate, characteristic of traditional Islamic architecture. The lighting is soft, highlighting the textures of the stone and the depth of the carvings.

# Wall Panels

This luxurious private villa in Muscat exemplifies refined craftsmanship and opulent design, blending traditional Islamic architecture with contemporary sophistication. The interiors feature intricate flooring inlays and bespoke wall treatments created using a selection of semi-precious stones, meticulously arranged into floral and geometric artworks. The villa also showcases grand malachite stone columns crowned with gold-finished capitals, adding a regal presence to the hallways. From hand-carved wooden arches to polished marble mosaics, every detail reflects the highest standards of artisanal execution and elegance.















A bathroom interior featuring a large, ornate glass mosaic wall with a floral design. A white bathtub is in the foreground, and a window with a decorative railing is on the left. The ceiling has a recessed light fixture.

## Glass Mosaics

Art House's latest glass mosaic collection blends timeless craftsmanship with modern design. Each piece showcases elegant transparency and rich color in a variety of finishes. Inspired by nature and crafted with premium materials like stainless steel and brass, these mosaics serve as stunning wall features, ceiling installations, or freestanding art. Ideal for luxurious interiors, they offer both beauty and structural integrity—perfect for clients seeking sophisticated, customizable design solutions.

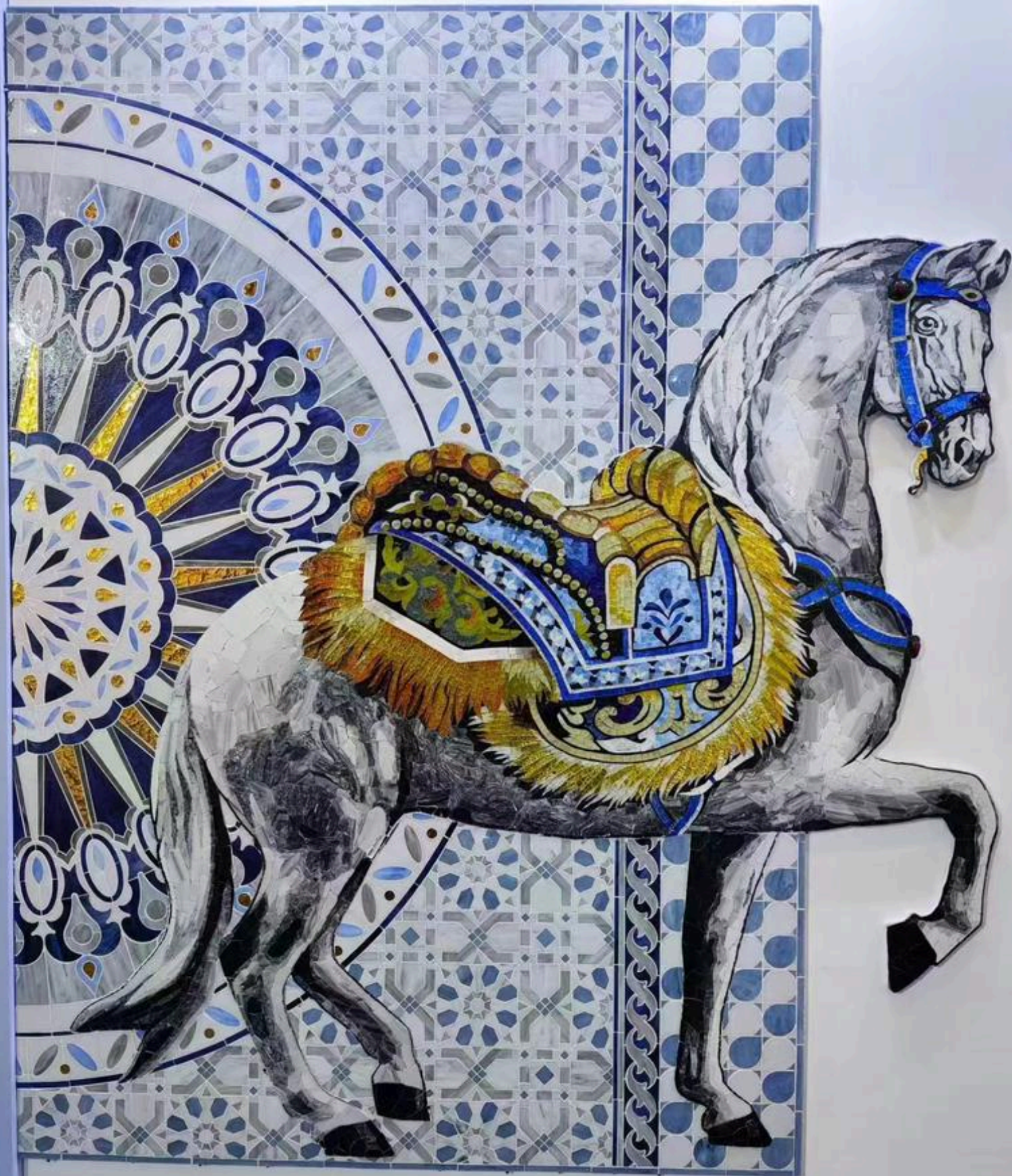




















## Stone Furniture

Art House proudly presents a breathtaking collection of pietra dura table tops, where fine art meets functional design. Each piece is a masterwork of intricate stone inlay, handcrafted by skilled artisans using time-honored techniques passed down through generations.

Sourcing only the finest semi-precious stones—including lapis lazuli, malachite, mother-of-pearl, jasper, and onyx—these table tops feature exquisite floral motifs, geometric patterns, and traditional Mughal-inspired designs. The seamless precision of the inlay work, combined with rich natural hues and polished finishes, makes each table a unique statement of elegance and craftsmanship.

Whether displayed as centerpieces or integrated into luxury interiors, Art House's pietra dura tables are more than furniture—they are heirloom-quality expressions of timeless artistry.























# CONTACT US

Barun Chandra

(Director)

+91 9897032626

[barun@stonecrafts.com](mailto:barun@stonecrafts.com)



Instagram

Meenakshi Chandra

(Manager)

+91 9897072727

[sales@stonecrafts.com](mailto:sales@stonecrafts.com)



Website

Sooraj Chandra

(Manager)

+91 7060076727

[info@stonecrafts.com](mailto:info@stonecrafts.com)